



BAMOGALE

Modular units

Architectural Proposal

The subsequent presentation showcases a comprehensive and functional staff kiosk, designed with simplicity and modularity in mind. The unit's framework consists of a basic steel structure, clad with vertical decking, IBR sheeting, and partition walls. Additionally, the kiosk is encircled by a spacious decking area, thoughtfully covered with a stretch tent, providing a comfortable and shaded environment for staff and/ guests.

Get Started



INSPIRATION



BAMOGALE

CONTEMPORARY, MINIMILISTIC AND PRACTICAL

Inspiration is derived from one of our own “EARTH BOX” designs. The idea is to create a similar steel framed, insulated and cladded unit using natural materials such as wood, glass and steel.

NEXT



THE DESIGN

STAFF KIOSK

East facing view

THIS MODULAR, LOW CARBON FOOTPRINT DESIGN IS ALLOCATED ON THE EAST SIDE OF THE PROPERTY. FACING WEST AND NORTH (TOWARDS SOLOMAN MAHLANGU ROAD)

Read More...





NORTH VIEW

FACING LYNNWOOD ROAD



Existing trees and shrubs will be removed to make way for the new modular unit, which will be installed in the designated location.

FEATURES

01

stretch tent to cover the patio area, ensuring adequate shading.

02

The deck area will be accessed by a 250mm step leading up from a corner of the parking space.

03

A corner window located near the washbasin area in the kitchen will face towards Block B, providing a view of the adjacent building.



STAFF KIOSK **SPACE**



This 6.2m x 4m unit has been designed to accommodate a staff kitchen, coffee lounge, and indoor seating area.

Additionally, the unit features an outdoor deck that can comfortably seat around 25 staff members during lunchtime.

Learn More





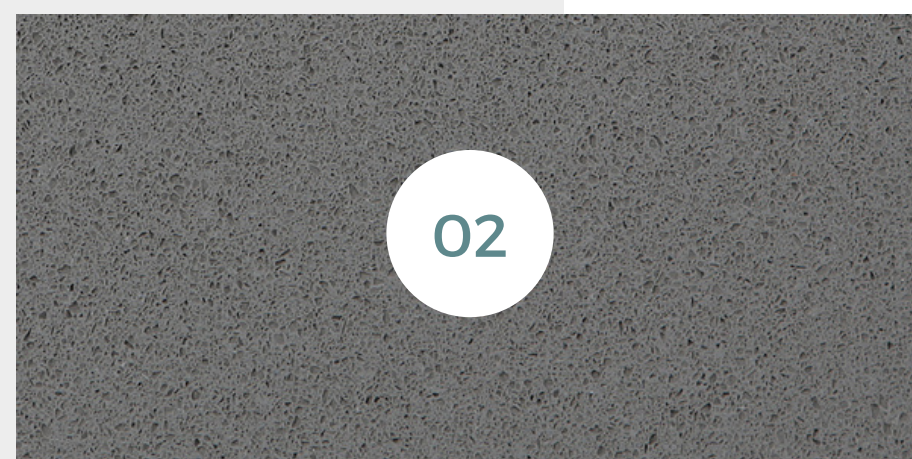
INTERIOR

KITCHEN

THE KITCHEN SPACE IS 3,2 X 4,2m2 WITH AN AREA OF 13,44M2.

THE KITCHEN DESIGN INCLUDES SPACE FOR THE FOLLOWING:

- *DOUBLE DOOR FRIDGE
- *2 X UNDER/COUNTER BAR FRIDGES
- *3 X MINI HOB GAS STOVES
- *BUILT IN OVEN
- *DOUBLE SINK
- *CUPBOARDS, DRAWERS AND A SUFFICIENT AMOUNT OF COUNTER SPACE.

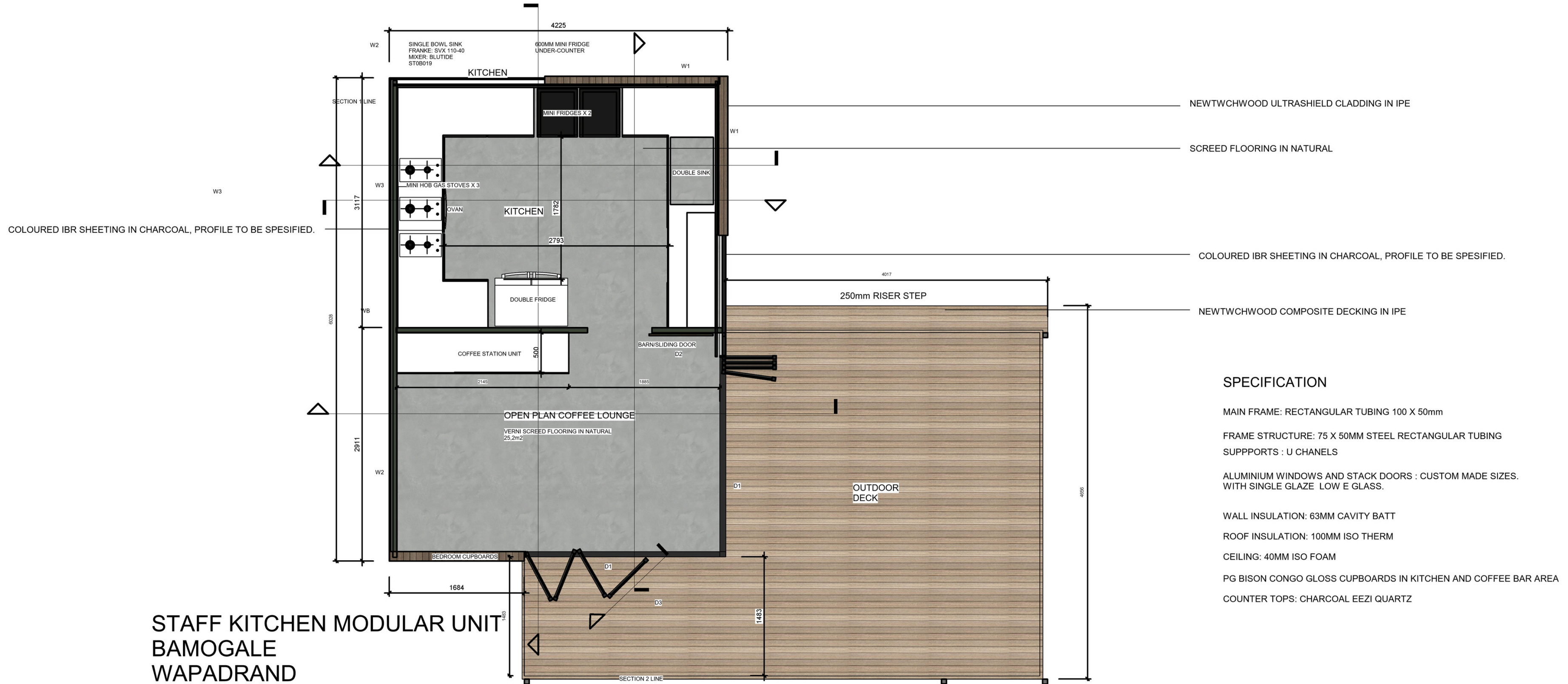


1.PG BISON MELAWOOD CUPBOARDS IN CONGO, GLOSS.

2.EEZI QUARTZ COUNTER TOPS IN CHARCOAL.

FLOORPLAN

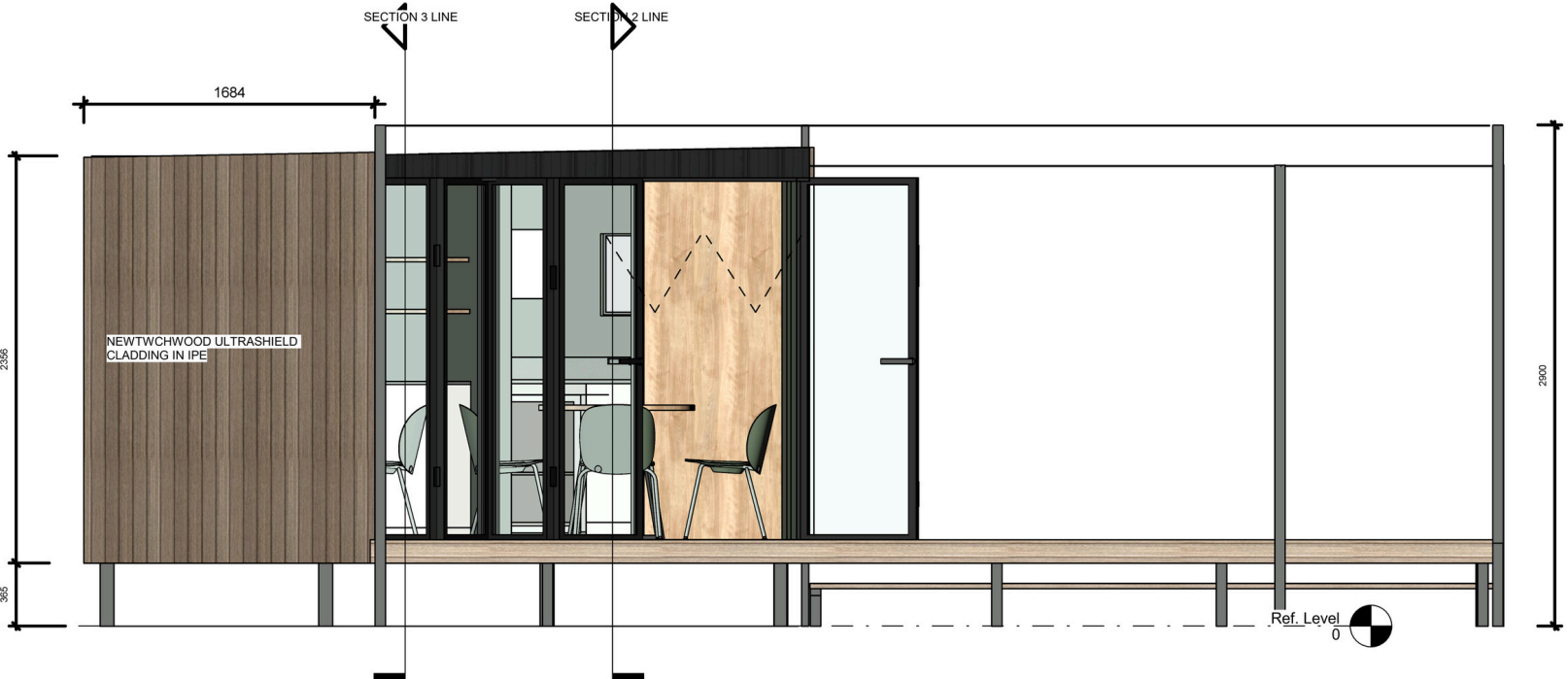
STRUCTURAL DETAILS



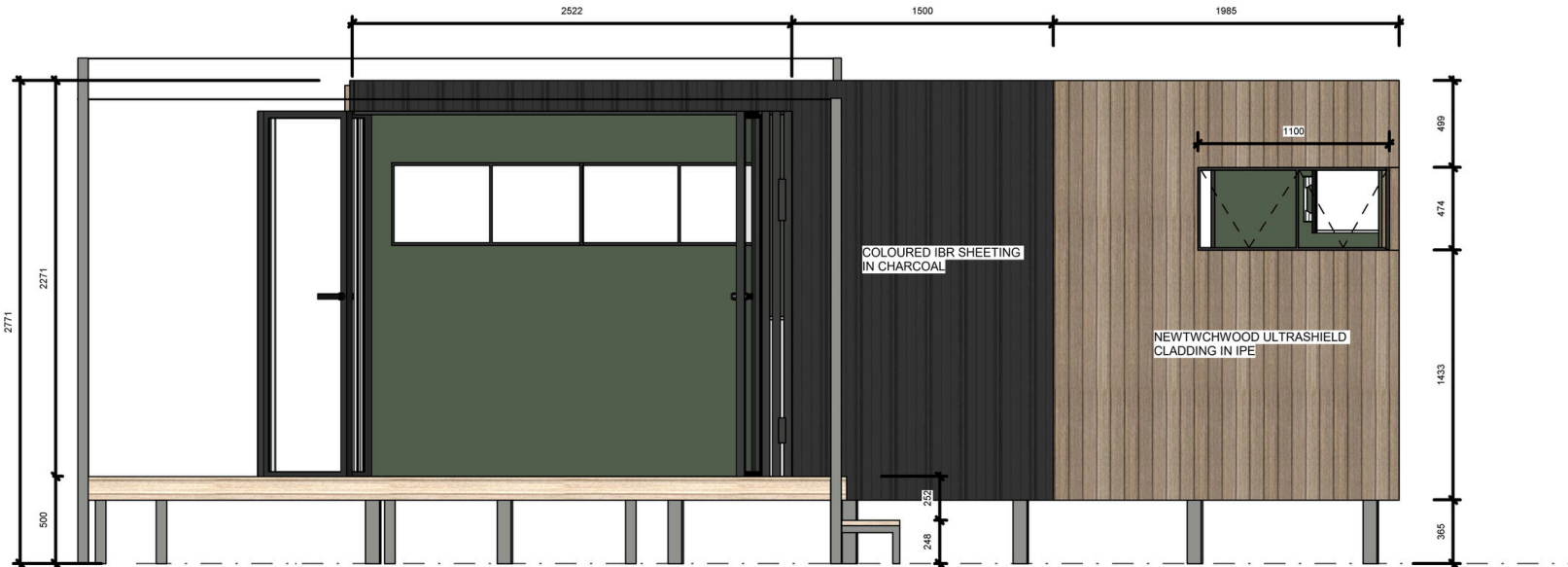
STAFF KITCHEN MODULAR UNIT
BAMOGALE
WAPADRAND

ELEVATIONS

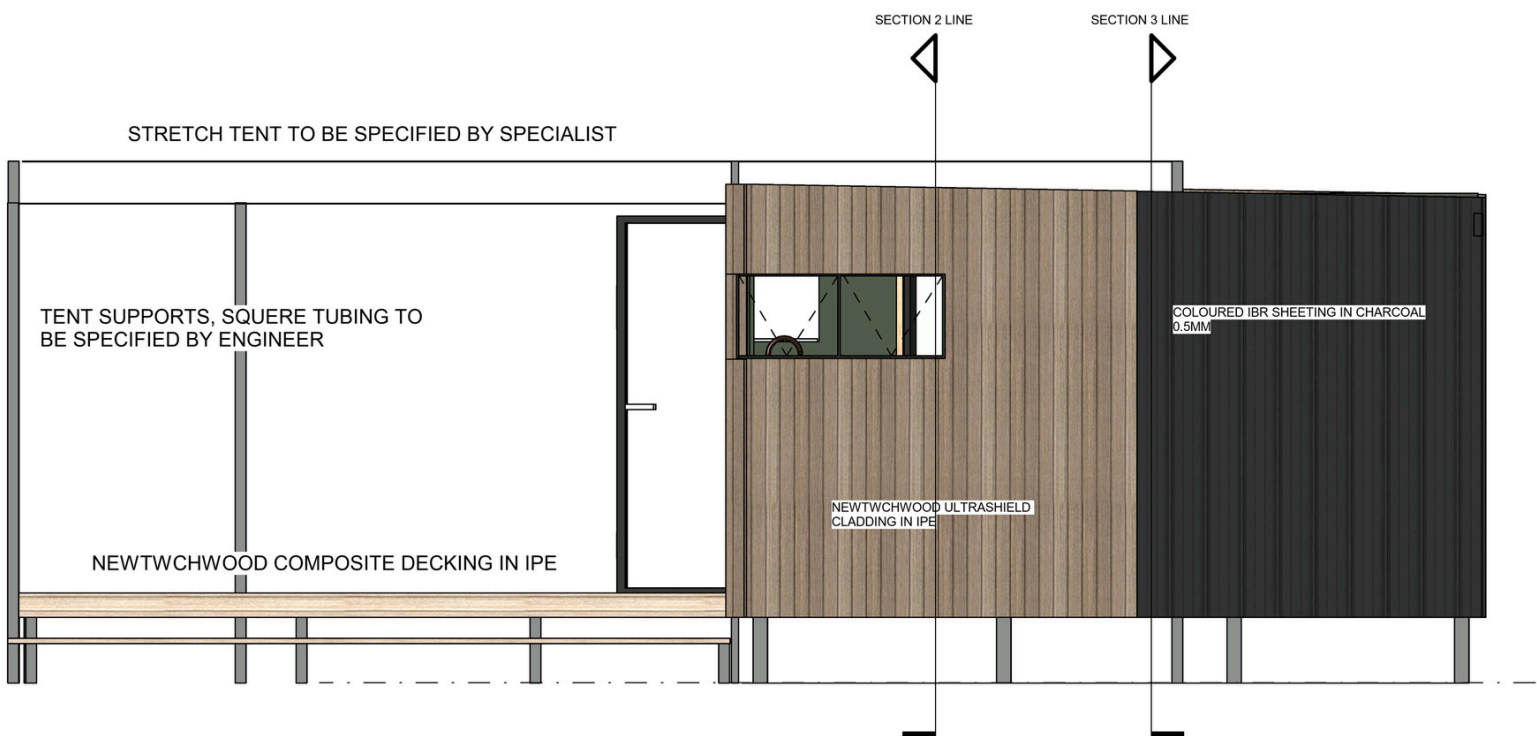
STRUCTURAL DETAILS



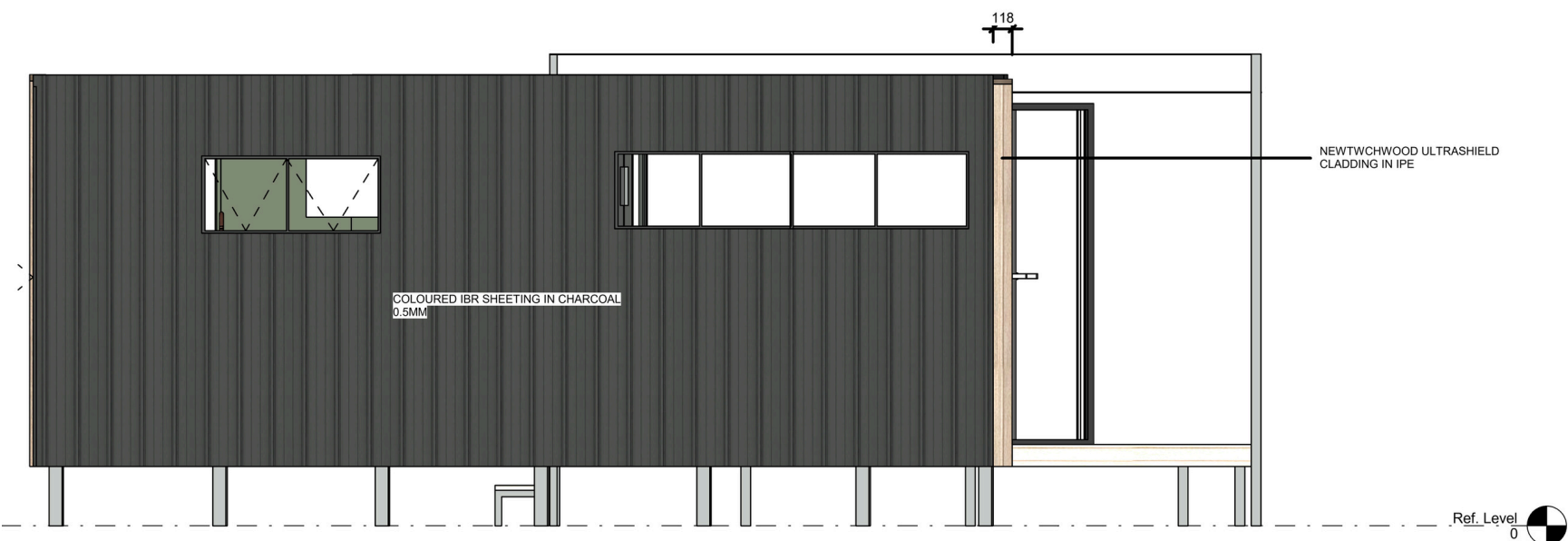
SOUTH VIEW



WEST VIEW



NORTH VIEW



EAST VIEW

SECTION 1

STRUCTURAL DETAILS



SPECIFICATION

TO BE CONFIRMED BY ENGINEER.

- MAIN FRAME: RECTANGULAR TUBING 100 X 50MM
- FRAME STRUCTURE: 75 X 50MM STEEL RECTANGULAR TUBING
- FLOOR SUPPORTS: U CHANEL

ALUMINIUM WINDOWS AND STACK DOOR : CUSTOM MADE SIZES. WITH SINGLE GLAZE LOW E GLASS.

- WALL INSULATION: 63MM CAVITY BATT
- ROOF INSULATION: 100MM ISO THERM
- CEILING: 40MM ISO FOAM

PG BISON CONGO GLOSS CUPBOARDS IN KITCHEN AND COFFEE BAR.

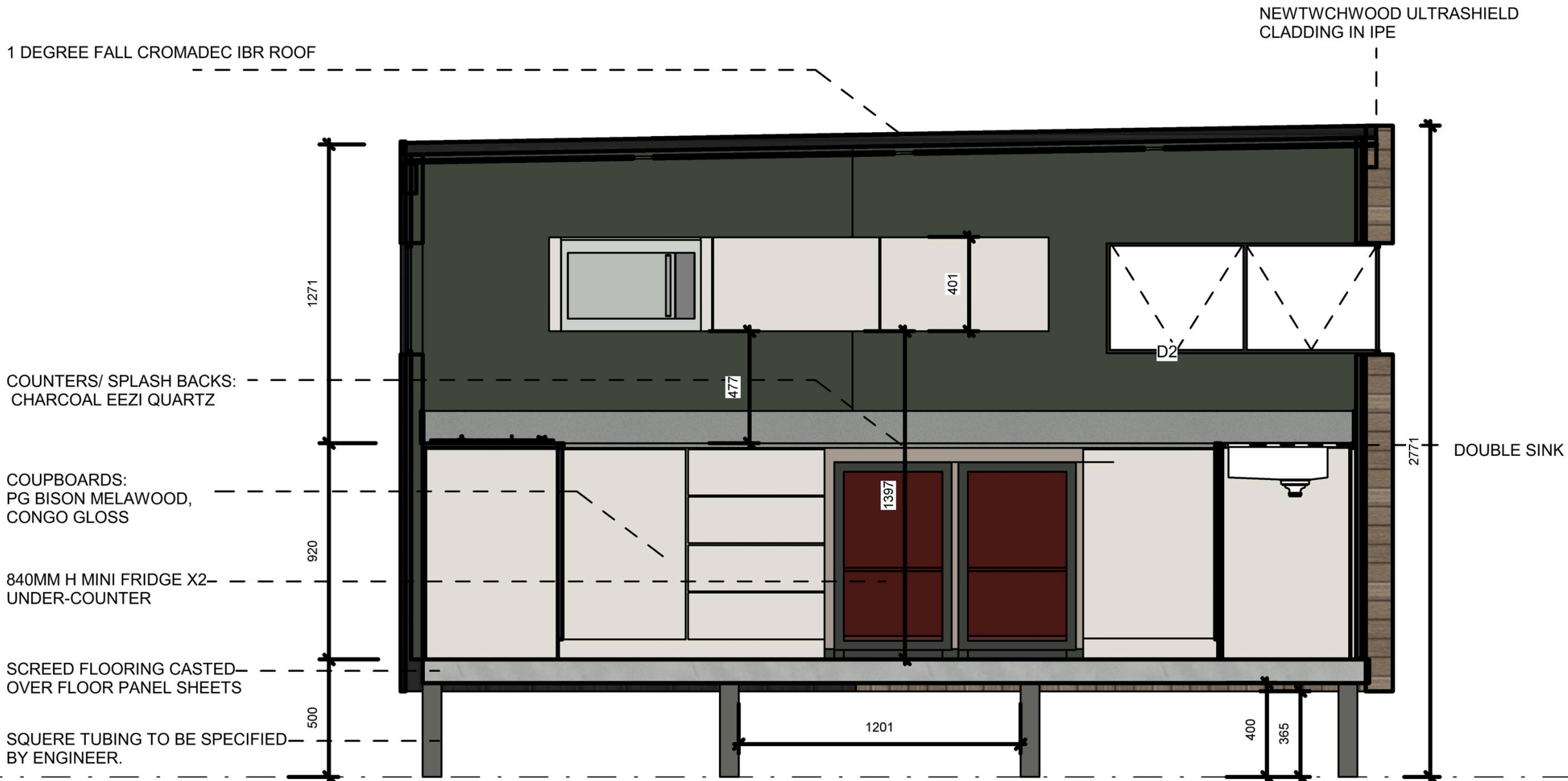
COUNTERS: CHARCOAL EEZI QUARTZ

EXTERIOR CLADDING:

CHROMADEC IBR SHEETING IN CHARCOAL
NEWTCHWOOD ULTRASHILED CLADDING IN IPE

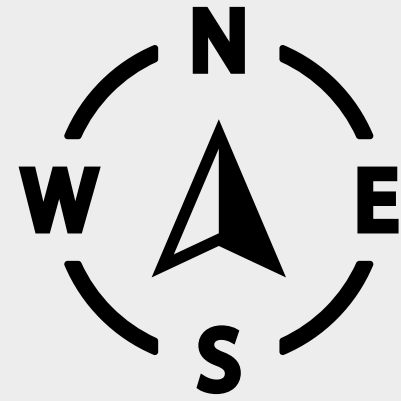
INTERIOR CLADDING:

PAINTED PARTITION WALLS.



Ref. Level 0

SECTION 1



STAFF KIOSK

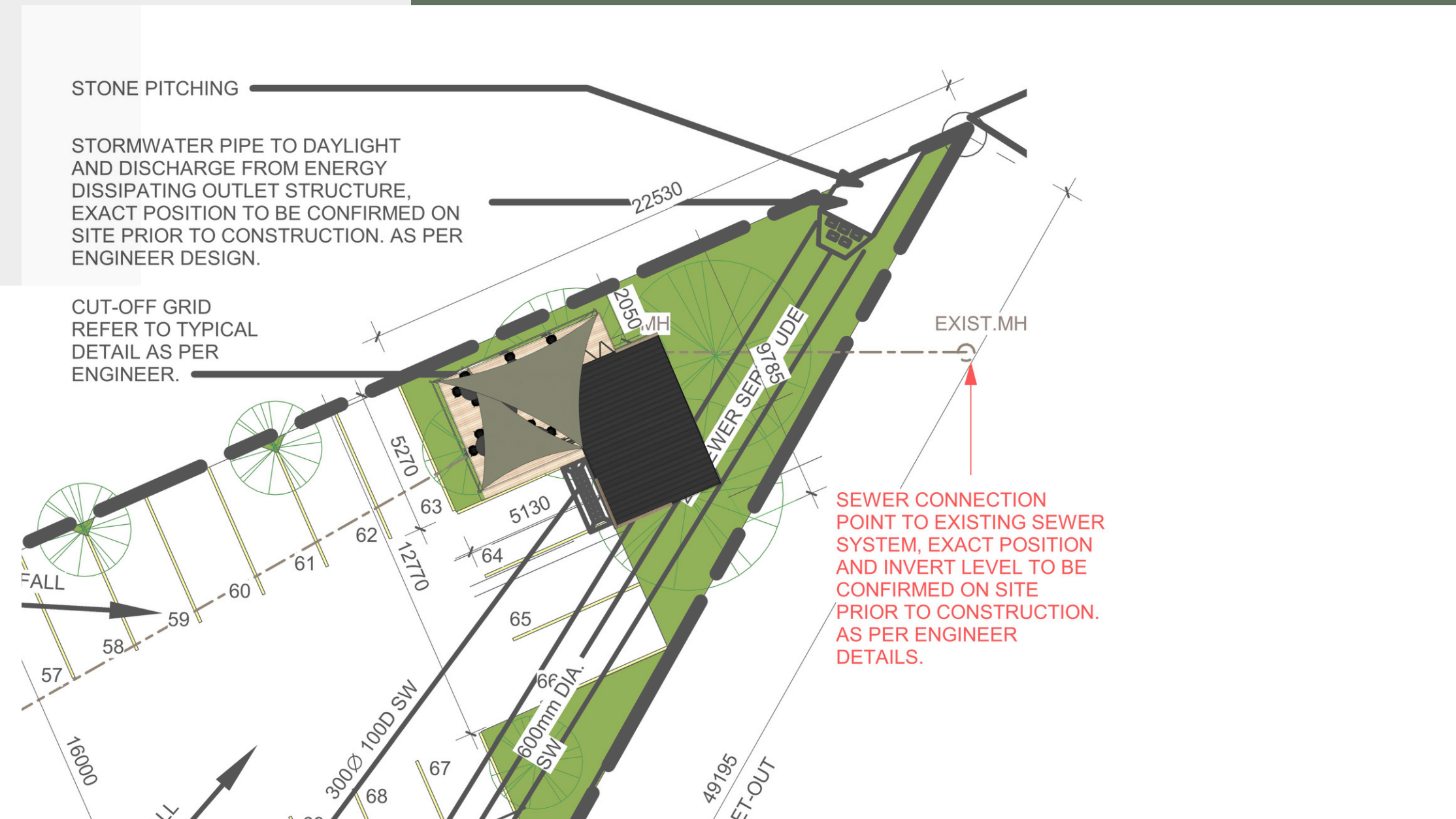
SITE LAYOUT

PLACEMENT

THE UNIT IS ALLOCATED ON THE NORTH/EAST PART OF THE PROPERTY, FACING NORTH AND WEST TOWARDS SOLOMAN MAHLANGU ROAD)



THE UNIT WILL BE PLACED APPROXIMATELY 2M FROM THE ERF BOUNDARY LINE.



BAMOGALE

Thank You

FOR ALL YOUR ATTENTION

PLEASE SEE BATHROOM UNIT DESIGNS
ON THE FOLLOWING PAGES.

BATHROOMS





THE DESIGN

BATHROOM UNITS

East facing view

THIS MODULAR, LOW CARBON FOOTPRINT DESIGN IS ALLOCATED ON THE EAST SIDE OF THE PROPERTY. FACING WEST AND SOUTH (TOWARDS SPANTOU STREET)

Read More...



NORTH VIEW

FACING LYNNWOOD ROAD



Existing trees and shrubs will be removed to make way for the new modular unit, which will be installed in the designated location.

FEATURES

01

IBR cladding & feature Newtec wood slats with frosted windows throughout

02

Ample space inside the unit - With a practical space layout.

03

Isolated in a small portion of the site, Hidden from the main views of BLOCK B



STAFF BATHROOM

SPACE



This 8.4m x 8 m unit has been designed to accommodate female and male restrooms. On the exterior of BLOCK B, Wapadrand

Learn More



INTERIOR

BATHROOM

THE BATHROOM SPACE IS 8,4M x 8M WITH AN AREA OF 33,18M².

THE BATHROOM DESIGN INCLUDES SPACE FOR THE FOLLOWING:

- *6 X CLOSE COUPLE TOILETS - 2 MALE & 4 FEMALE
- *5 X SQUARE WALL MOUNT BASINS - 3 MALE & 2 FEMALE
- *3 X URINALS - MALE BATHROOM
- *BUILT IN CUBICLES WITH VENTELATION OPENINGS
- *HIGH BUILT IN WINDOWS FOR NATURAL VENTELATION



1.PG BISON SUMMER WHITE - MELAWOOD

2.SAGE WALL PAINT

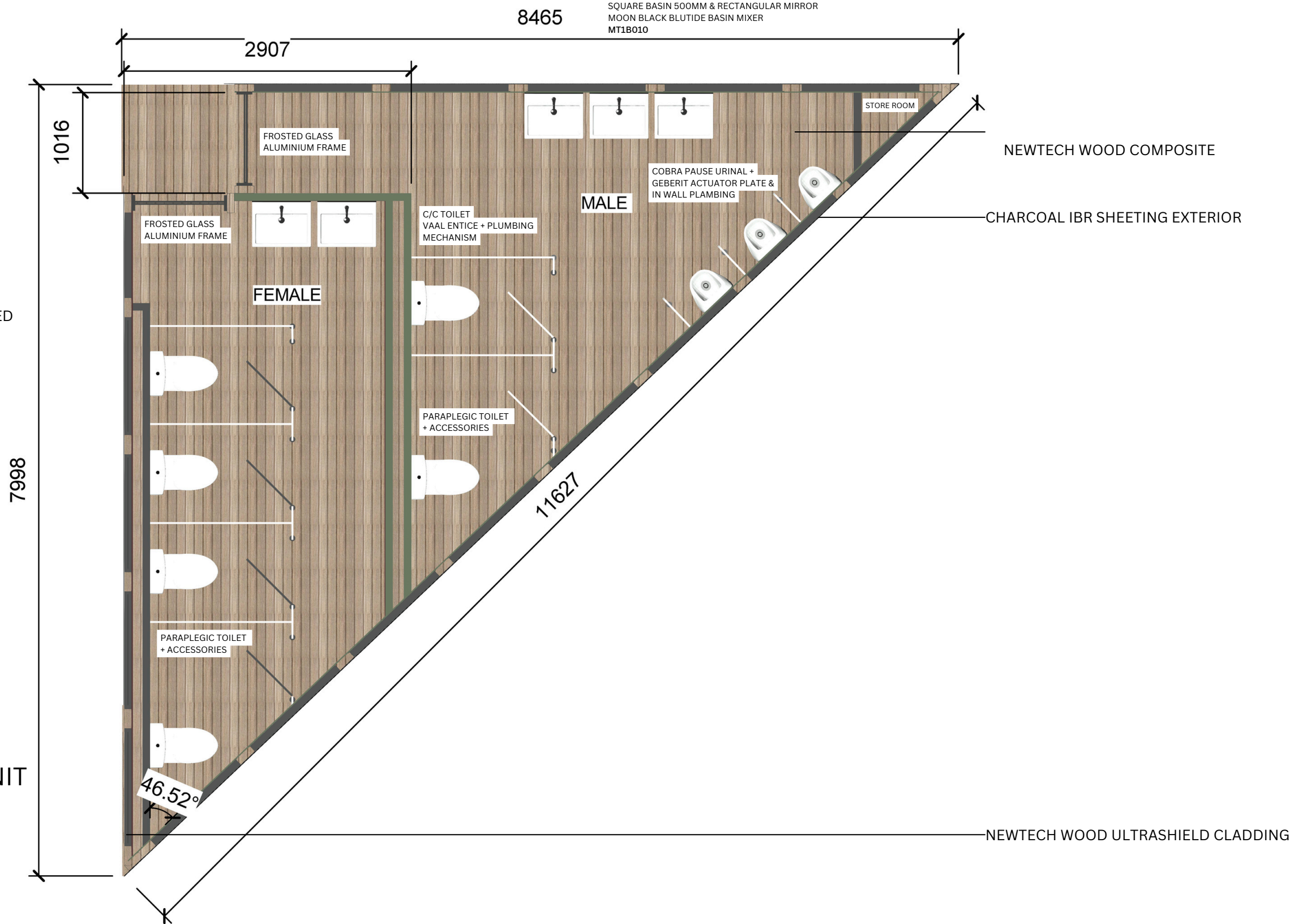
FLOORPLAN

STRUCTURAL DETAILS



COULURED IBR SHEETING IN CHARCOAL TO BE SPESIFIED

STAFF BATHROOM MODULAR UNIT
BAMOGALE
WAPADRAND

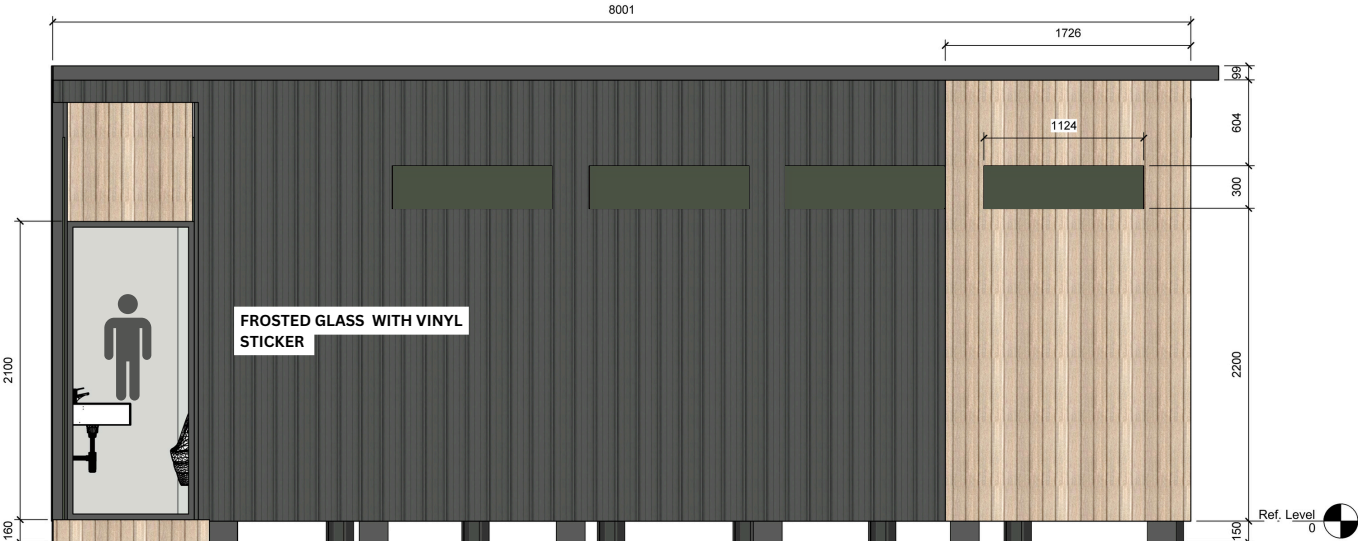


ELEVATIONS

STRUCTURAL DETAILS

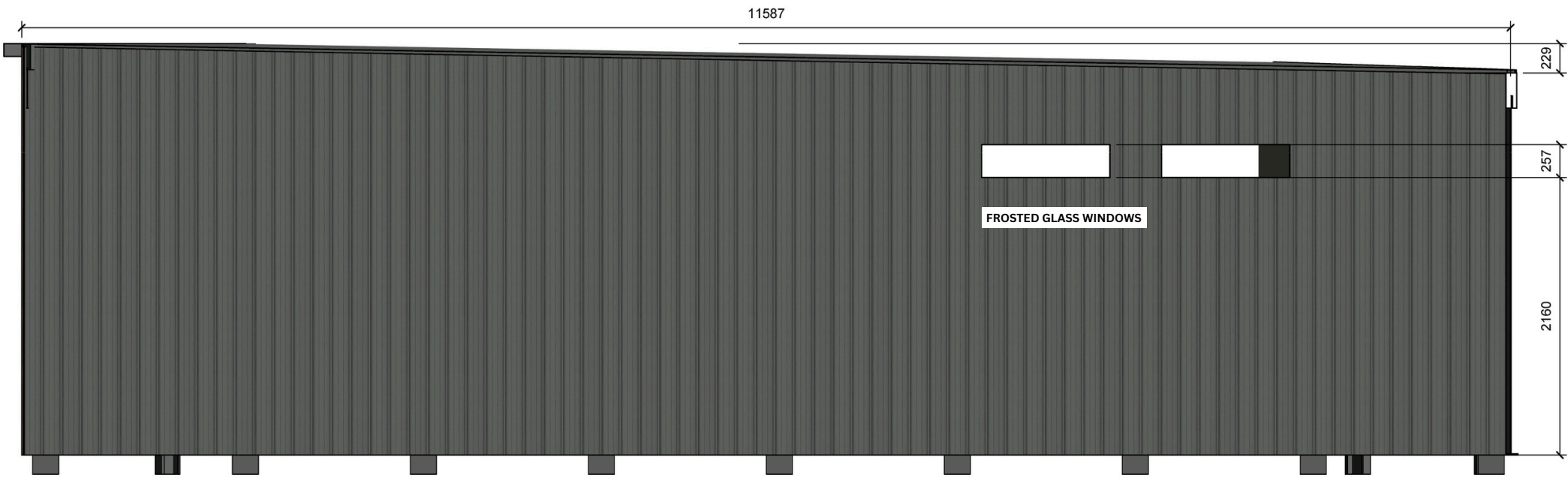


SOUTH VIEW



WEST VIEW

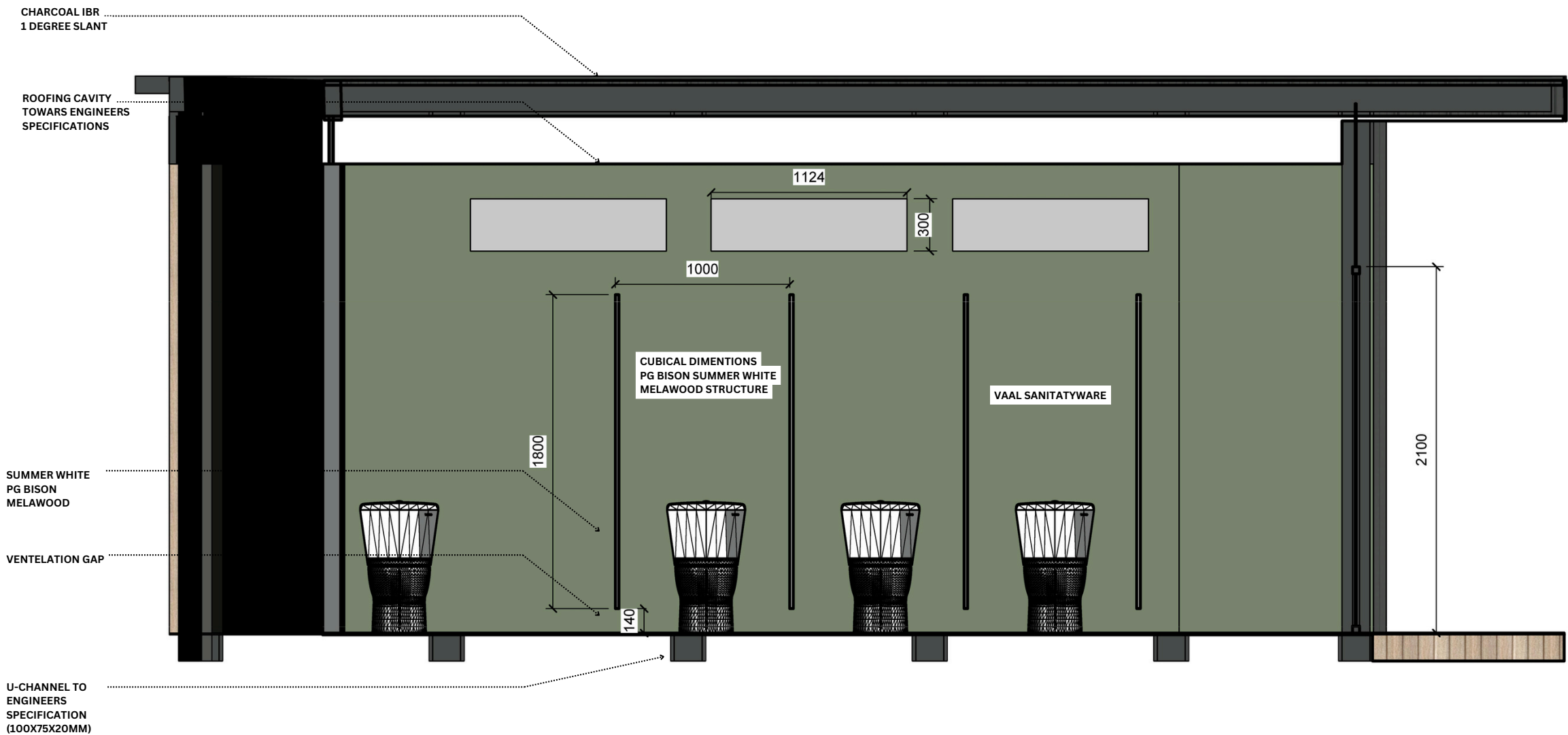
100X75X20MM
U-CHANNEL



**SOUTH - EAST VIEW
(SCEW WALL)**

SECTION 1

STRUCTURAL DETAILS



SPECIFICATION

MAIN FRAME: RECTANGULAR TUBING 75 X 50

FRAME STRUCTURE: 75 X 50MM STEEL
RECTANGULAR TUBING

SUPPORTS: U CHANNEL

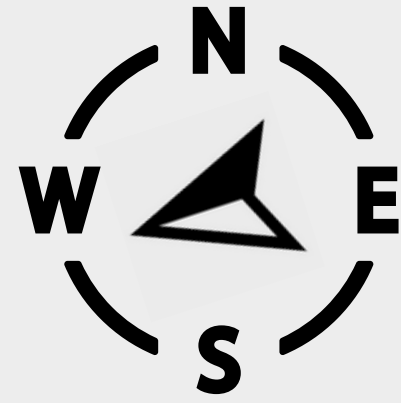
ALUMINIUM WINDOWS & DOORS: CUSTOM MADE
SIZES WITH LOW E GLASS AND FROSTED VINYL

WALL INSULATION 75MM CAVITY BATT

ROOF INSULATION: 100MM ISO THERM

CEILING: 40MM ISO FOAM

PG BISON SUMMER WHITE / SUMMER WHITE DUCO
MDF BOARDS



STAFF BATHROOM

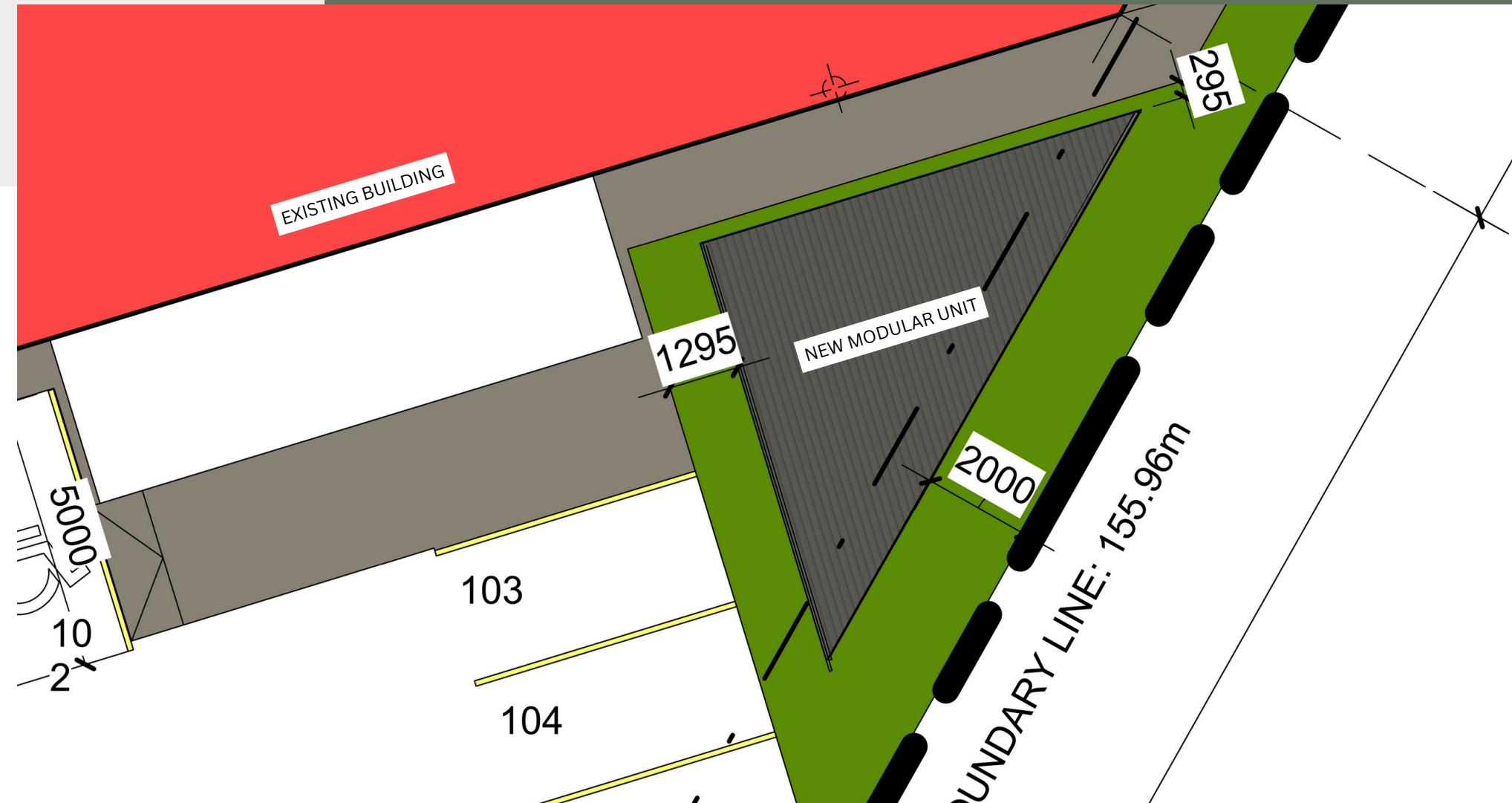
SITE LAYOUT

PLACEMENT

THE UNIT IS ALLOCATED ON THE NORTH/EAST PART OF THE PROPERTY, FACING SOUTH AND WEST TOWARDS SPANTOU AVENUE)



THE UNIT WILL BE PLACED APPROXIMATELY 2M FROM THE ERF BOUNDARY LINE.



BAMOGALE

Thank You

FOR ALL YOUR ATTENTION

